

*It is not so important  
to have all the answers  
as to be hungry for them.*

BIOLOGY

# BIOLOGY

## BINOCULAR MICROSCOPE

### RESEARCH SERIES

#### Gold Cross 11

GOLD CROSS MICROSCOPES BRING ACCURACY RELIABILITY AND EASY OPERATIONS BESIDES VARIOUS ATTACHMENTS AND ADD-ONS TO FURTHER EXTEND CAPABILITIES OF VIEWING, CAPTURING, ROUTINE TO CRITICAL RESEARCH TECHNIQUES SUCH AS VIDEO PRODUCTION SYSTEMS, IMAGE ANALYSIS SYSTEM, PHASE CONTRAST AND MICRO PHOTOGRAPHY.

#### Technical features:

**OPTICS:** High Eye-point compensating extra wide field (18 mm) eyepieces combined with High Quality Achromatic Objectives (Parfocal Distance-45mm), as per DIN Standards with anti-reflection coat, gives sharper resolution and extra flat field of view and a colour free image.

**NOSEPIECE:** Special quadruple revolving nosepiece, ensures a common field center on changing magnifications and on re-introduction

**CO-AXIAL FOCUSING :** incorporates a very precise and wear resistant linear bearing mechanism that eliminates vibration and backlash. The coarse adjustment knob has a built-in Tension Adjustment Ring to control the tension of the focusing knob. The fine focus knob is graduated in 0.01mm increments.

**REFOCUSING LEVER:** prevents collisions between objective and specimen due to negligence or accidental stage movement. The lever can also be fixed at the desired focusing position of the coarse adjustment for easier refocusing, even at higher magnifications.

**ANTI-MOULDING PROTECTION :** Gold Cross 11 comes with special construction and anti-moulding protection to protect the microscope from any kind of mould formation which could permanently damage the optics .

Gold Cross 11 (Code No. : 30010) has a LARGER MECHANICAL STAGE of 150x120mm size. It works on a linear bearing mechanism with a right-hand CO-AXIAL movement controller with a travelling range of 75 x 45 mm which can be read to 0.01 mm on the scale provided.

#### LIGHT SOURCE of 6V-20W

Halogen light provides a bright and even illumination at any magnification. The light intensity control is separate from the power switch. The lamp is pre-centered with easy bulb replacement for your convenience. (without opening the base or electricals)



11

## BIOLOGY ► MICROSCOPE



Gold Cross 22

### OPTIONAL ATTACHMENT AND ACCESSORIES

**DUAL VIEWING ATTACHMENT** with Pointer Arrow enables observation of the same sharp, bright image by two separate viewers simultaneously. A movement level control allows the Pointer Arrow to be positioned anywhere in the field of view

**DIRECT EXPOSURE** (for Micro Photography) wherein the image formed by the objectives is projected directly onto the film through a projection lens system or beam splitters, in-between.

**TRINOCULAR OBSERVATION TUBE** The slider arrangement provides for 100% light to Binocular, or 100% light to the straight photo tube, to enable the maximum light for Microphotography, for best results.

**PHASE CONTRAST - EQUIPMENT** eliminates the need to treating specimens with chemical stains, which avoids any possible damage to the specimen helps in observing the specimen in its natural cellular structure & behavior.

**CCTV & IMAGE ANALYSIS SYSTEM** Enables direct viewing of the images on TV, providing a perfect media for Classroom teaching, demonstration and group discussions in Conferences and Seminars.

**SIEDENTOPF HEAD** with infinity corrected optics

**DARK FIELD ATTACHMENT**

**EP-ILLUMINATOR** for Incident Light Microscopy

**POLARISER/ANALAYSER** Attachment

Gold Cross 22 Binocular Microscope (Code No.: 30020)

is similar to Gold Cross 11 but with regular wide field eyepieces and with separate coarse and fine focussing knobs as against co-axial in Gold Cross 11

BIOLOGY

	Goldcros 11 Binocular	Goldcros 22 Binocular	Goldcros 33 Monocular	Goldcros 44 Student	Optional
<b>Code</b>	30010	30020	30030	30040	
<b>Eye Piece</b>	Ex. WF 10x (18 mm)	WF 10x	WF 10x	WF 10x	WF 6x, 15x
<b>Objective</b>	4x, 10x, 40x, 100x DIN	4x, 10x, 40x, 100x	4x, 10x, 40x, 100x	10x, 40x,	20x & 60x
<b>Nosepiece</b>	Quadruple	Quadruple	Quadruple	Triple	Quintuple
<b>Diaphragm Condenser</b>	Movable substage condenser NA 1.2 with IRIS Diaphragm and filter	Movable substage condenser NA 1.2 with IRIS Diaphragm and filter	Movable substage condenser NA 1.2 with IRIS Diaphragm and filter	Movable substage condenser NA 1.2 with IRIS Diaphragm and filter	
<b>Focussing</b>	Co-Axial	Separate	Separate	Separate	
<b>Illumination</b>	6V-20 W Halogen	6V-20 W Halogen	6V-20 W Halogen	mirror	
<b>Power Supply</b>	110 or 220V-50HZ	110 or 220V-50H	110 or 220V-50H	Non-electric	(110-220) V

## GOLDCROSS

Gold Cross 33 (Code No.: 30030) Monocular Microscope is the same as Gold Cross 22 but with a single eyepiece monocular head

Gold Cross 44 (Code No.: 30040) Student Microscope A versatile Microscope suitable for a wide range of needs and applications, from elementary / high school, to college levels. It combines economy and precision craftsmanship to meet strict laboratory standards with optimum value.

Inclinable body, through 90 degrees, and a standard tube length of 160 mm. Separate coarse and fine focussing knobs, with graduation on one side. Fixed Square stage 120 x 120 mm with detachable mechanical stage having travel range of 50 x 75 mm, with graduated scales Illumination is provided through plano-concave mirror. Also available with 20W lamp for 220v (optional. A Movable substage condenser NA 1.2 with is provided with aperture selection through a Disc Diaphragm turret providing different apertures for different magnifications. Triple nosepiece, precision built, ensures centering through positive click stop.

1. Magnification may range from 24x to 1500x depending on eye piece and objective combination.
2. All eyepieces, objectives and Prisms are specially treated for anti-reflection and anti moulding to further enhance the image and longevity of the optics.
3. All the optics are strictly manufactured to the international standard with the maximum tolerance of  $\pm 5\%$



**BINOCULAR MICROSCOPE**STUDENT SERIES

Code No. :30070

Binocular Microscope is of entirely latest design of superb quality and excellent craftsmanship for unprecedented performance. Its precise and international standards and dimensions presents a magic appearance and matchless superiority in performance. The high quality parfocaled optical components give an excellent brighter and sharp image and are highly corrected for chromatic aberration and assure highest resolution & flatness of field required for various research and clinical work.

**TECHNICAL FEATURES:**

- ☞ Very superior Indian, with international standards, Binocular head rotatable through 360° and interchangeable for Trinocular, or Monocular, or straight tubes.
- ☞ Extra large stage of 130 x 130 mm, providing ample space, with a detachable mechanical stage of extra superior quality.
- ☞ Fine adjustable graduated 0-50 knob for slow motion and separate double knobs for coarse movements.
- ☞ Extra heavy revolving nose piece of international Threadings, with positive click stop giving frictionless, uniform and accurate alignment.
- ☞ Double lens, best superior Abbe condenser with iris diaphragm and swing out filter holder focussed by rack and pinion substage.
- ☞ Heavy sturdy stable base having a built in base illumination built in 12 V to 21 V.
- ☞ Enclosed rack and pinion in dust and dirt proof enclosure. Present coarse rack lock saves valuable slides and objectives.
- ☞ Complete, fitted in durable plywood storing cabinet with apartments for optics.
- ☞ Mechanical stage graduated for slide.



Code No. :30080

Model GST - 1A Binocular Microscope is same as GST - 1 but with co-axial mechanical stage

TECHNICAL FEATURES:

- ☞ Very superior Indian, with international standards, Binocular head rotatable through 360° and interchangeable for Trinocular, or Monocular, or straight tubes.
- ☞ Extra large stage of 130 x 130 mm, providing ample space, with a co-axial mechanical stage of extra superior quality.
- ☞ Fine adjustable graduated 0-50 knob for slow motion and separate double knobs for coarse movements.
- ☞ Extra heavy revolving nose piece of international Threadings, with positive click stop giving frictionless, uniform and accurate alignment.
- ☞ Double lens, best superior Abbe condenser with iris diaphragm and swing out filter holder focussed by rack and pinion substage.
- ☞ Heavy stable base having a built in base illumination built in 12 V to 21V.
- ☞ Enclosed rack and pinion in dust and dirt proof enclosure. Present coarse rack lock saves valuable slides and objectives.
- ☞ Complete, fitted in durable plywood storing cabinet with apartments for optics.
- ☞ Mechanical stage graduated for slide superior.



Code No. :30085

Same as GST - 1 but with co-axial mechanical stage and co-axial fuse /co-axial focusing.

## ▶ BIOLOGY ▶ MICROSCOPE

### INCLINED MICROSCOPE

Code No. : 30090

Most Convenient for general Laboratory Research, Hospital and Pathology, Heomatology, Bacteriology & Medicine work.

TECHNICAL FEATURES:



- ☞ Inclined monocular tube, rotatable through 360° and interchangeable for a Binocular Head or Vertical tube for micro-photography.
- ☞ Fine adjustment through graduated knob.
- ☞ Quadruple revolving nose piece with positive click stop, bearing mounted for smooth, accurate alignment.
- ☞ Large rectangular stage, size 130mm x 130 mm, with an attachable mechanical stage with co-axial adjustment for slide manipulation.
- ☞ Two Lens Abbe Condenser with iris-diaphragm and swingout filter holder, focussed by rack and pinion substage.
- ☞ Heavy oblong sturdy base having a built in base illumination on 220 volts AC direct mains with special accentric ring-setting for light.
- ☞ Enclosed rack and pinion prevents wear due to dust and dirt. Present course rack lock prevents damage to valuable slides and objectives.
- ☞ Complete with a beautiful storing cabinet having provision for placing micro-optics.

### STEREOSCOPIC MICROSCOPE

Code No. : 30100

- ☞ Magnifications 25x or 35x, further extension possible.
- ☞ The stereoscopic microscope is suitable for innumerable specific applications where stereoscopic vision viz. a three dimensional, erect image is required.

TECHNICAL FEATURES:

- ☞ Strong microscope stand of medium size with built in carrying handle sturdy base and modern finish.
- ☞ Binocular head is of straight type and interpupillary distance of each tube can be adjusted within 50 mm - 75
- ☞ Image focussing by means of rack and pinion.
- ☞ Long working distance allows convenient working.
- ☞ Large stage with black and white plate and 2 clips to hold the specimen.
- ☞ Polished wooden cabinet with lock, keys and carrying handle.



**STUDENT MICROSCOPE**

Code No. : 30110

Student Microscope Fixed Condensor is a general Student Microscope which finds a wide application for students of Biological, Medical and Agricultural Institutions with the following features.

**TECHNICAL FEATURES:**

Heavy Pattern. Versatile designed monocular body; 90° inclinable with a V-shape base; Total Height 32 cm.

Mechanical tube length  $160 \pm 1$  mm. Interior dia. 40 mm.

Rack and pinion coarse motion and lever type fine adjustment.

Coarse focus range 25 mm. Fine focus range 2 mm.

Triple revolving nose piece with positive click stop.

Square specimen stage size 120 mm x 120 mm.

Two lens Abbe condensor N.A. 120 with continuously variable iris diaphragm and swingout filter-holder. Safety stopper, prevents damage to slide and objectives.

A standard plano-concave mirror in fork replaceable by a sub-stage microscope lamp. Complete with plywood storing cabinet having provision for placing micro-optics.

**OVERHEAD PROJECTOR**

Code No. : 30120

Projects bright and sharp image from handwritten illustrations, graphs, pictures and diagrams on transparent materials.

Uniform illuminations even at highly elevated position of the image, without need for dimming lights.

Writing stage of 250mm x 250mm to suit all standard transparencies.

Suitable for any projection distance from 1.3m to 3metres, therefore well suited even for small rooms and conference rooms.

Continuous writing from top to bottom or left to right on 10 meters long cellophane roll.

Indigenous projection lamp with longest life, easy availability, low voltage, high intensity 24 Volts, 250Watts, Halogen lamp working through high quality Transformer.

Cooling system to avoid projector overheating, self lubricating type motor, to ensure temperature is maintained at 45 °C approx.

**SPECIFICATIONS**

Projection lens: One element 254 mm

Condenser System: Fresnel

Condenser Projection lamp: 250W, 24V Halogen lamp

Power source: AC 220-240V, 50 Hz

Stage aperture : 250mm x 250mm

Focusing : Fine focusing with rack and pinion mechanism

Cooling system : Blower cooled

Lamp Safety : Solid state electronic control for light intensity variations.

Dimensions : 310mm (W) x 310mm (D) x 210mm(H)

Supplied with:

\* Writing pack consisting of 6 grease pencils.

\* Cellophane roll 10 m/ A4 size plain transparency 30 Nos, 2 No glass fuse

\* Cleaning cloth 1 No.

\* Dust cover packed with thermocole in sturdy cardboard box.



## ▶ BIOLOGY ▶ DISSECTING SET & AUTOCLAVES



### GOLDCROSS DISSECTING SET

Available in:

Set of 14 instruments	Code No. : 30130
Set of 8 Instruments	Code No. : 30136
Set of 7 Instruments	Code No. : 30138

### DISSECTING SET SPARES

Dissecting set spares are also available individually.



Spares	Code	Spares	Code
Dissecting Scissors	30140	Pointed needle	30147
Cuticle Scissors	30141	Arrow Needle	30148
Flapper	30142	Seeker	30149
Blow pipe	30143	Chain hook	30150
Hand Lens	30144	Blunt Forceps 5"	30151
Razor	30145	Forceps 4 " fine	30152
BP Handle	30146	x	x

### AUTOCLAVES

#### STAINLESS STEEL

Seamless construction ensures bacteria free environment .The unit is fitted with pressure gauge, safety valve (weighted)pressure release valve & with rotational lid locking device with rubber gasket.



Autoclave	Code
Electric	30180
Non Electric	30181

#### ALUMINIUM

#### SERIES 200

AVAILABLE IN ELECTRIC OR NON ELECTRIC MODELS IN VARIOUS SIZES.

SIZE ( cms)	Non-Electric		Electric		DESCRIPTION
	Model	Codes	Model	Codes	
30x30	GST-215	30172	GST-216	30180	Winged nuts
30x30	GST-217	30173	GST-218	30181	rotational lid
30x35	GST-219	30174	GST-220	30182	winged nuts

Seamless construction ensures bacteria free environment. The unit is fitted with pressure gauge, safety valve ( weighted)pressure release valve & rubber gasket for seamless/ leak proof fitting.



## CENTRIFUGES

### CENTRIFUGE MACHINE HAND OPERATED

A single speed hand driven machine consisting of a Die pressed casted parts and a steel pinion and Worm drive. Screw clamps the machine to the bench. Finished in white/gray color with removable crank Handle. Suitable for 15 ml tubes.

Description	Code
Two tubes	30190
Four tubes	30191



### MEDICO CENTRIFUGES

Code No. :30200

Low priced units meeting the majority of the small capacity centrifuging requirements of medical practitioners, pathological laboratories and hospitals for routine centrifuging tests. The units are fitted with resiliently mounted motor for vibration free performance having built in 5 steps speed regulator and one non-removable swing out rotor complete with glass tubes.

Optional : 0-60 minutes mechanical countdown timer.



### DOCTOR CENTRIFUGES

Code No. :30210

A low priced unit meeting the small capacity centrifuging requirements of medical practitioners, pathological, laboratories and hospitals for routine centrifuging tests. The standard unit is fitted with resiliently mounted motor for vibration free performance, a built in 5 step speed regulator and one non-removable angle rotor. Available in 4 models, complete with glass tubes.

Optional: 0-60 minutes mechanical countdown timer



## ▶ BIOLOGY ▶ CENTRIFUGE

### GENERAL PURPOSE LABORATORY CENTRIFUGES

Code No. :30220

Comes with speed regulator, digital speed indicator, countdown timer & has dynamic brake for quick deceleration and imbalance detector with cutoff in case of uneven loads.

Salient features:

Step less speed regulator.

Safety Lid Interlock to prevent cover opening during centrifugation.

Digital speed meter and 0-60 minutes digital countdown timer.

Dynamic brake for quick deceleration.

Imbalance detector with cutoff.



TECHNICAL DATA		
Max speed	rpm	5250
Max. Rcf	g	3900
Max. Capacity	ml	400
W xDx H	mm	365 x 415 x 305

Models	ROTOR HEADS LISTING		REDUCTION ADAPTORS (WITH GLASS TUBES)						
	Capacity	Max. Speed RPM	Max. RCF g'	101 (1x15ml)	102 (1x30ml)	111 (1xwintrob)	112 (1x3ml)	103 (1x5ml)	104 (1x8ml)
Swing Out Heads (with Glass Tubes)									
H-41	12x15ml	4000	2750	x	x	✓	✓	✓	✓
H-42	6x50ml	4000	2750	✓	✓	x	x	x	x

BIOLOGY

## ▶ BIOLOGY ▶ SLIDES

### SLIDE BOX

For keeping 75mm x 25mm glass slides in vertical position in aluminium groove individually. Nailwood frame, plywood top & bottom, hinged top lined with printed index sheet and bottom with velvet. Fitted with brass and aluminium index card holder. Spirit polish finish.

Slide box with Aluminium groove			
No. of slides	25	50	100
Code	30300	30301	30302

For keeping 75mm x 25mm glass slides in vertical position in wooden groove individually. Nailwood frame, plywood top & bottom, hinged top lined with printed index sheet and bottom with velvet. Fitted with brass and aluminium index card holder. Spirit polish finish.

Slide box with wooden groove			
No. of slides	25	50	100
Code	30310	30311	30312

These Polystyrene Slide Boxes are durable, compact & provide utmost protection to 1" x3" slides. Heavy walls will not warp, splinter or crack. Boxes are unaffected by humidity and are thoroughly insect proof. Base of the slide Box has a numbered index for easy slide identification. Slide box with Aluminium and wooden groves are also available which are mentioned in Biology chapter.

SLIDE BOX	CODE
25 Slides	21030
50 Slides	21031
100 Slides	21032



### MICRO PREPARED SLIDES

#### BOTANY SECTION

Category	Species	Codes	Category	Species	Codes
Algae /	Anabaena wm	30320	Bryophyta	Anthoceros thallus LS	30555
Fungi Veg.	Nostoc wm	30321		Funaria antheridia VS/WM	30556
& Rep. Stages	Nostoc Heterocyst	30322		Marchantia thallus TS	30557
	Oscillatoria wm	30323		Moss protonema WM	30558
	Chlamydomonas wm	30324		Polytrichum anteridial VS/WM	30559
	Chara veg. wm	30325		Ricca thallus TS	30560
	Chara reproductive	30326	Pteridophyta	Adiantum rhizome TS	30661
	Cladophra Marine wm	30327		Botrychium rhizome	30662
	Oedogonium Vegetative	30328		Equisetum prothallus WM	30663
	Oedogonium Capcells wm	30329		Fern prothallus with antheridia	30664
	Spirogyra vegetative	30330		Fern prothallus with archegonia	30665
	Ulothrix vegetative wm	30331		Fern prothallus with sporophyte	30666
	Volvox daughter colony wm	30332		Fern leaf with sori TS	30667
	Ectocarpus unilocular wm	30333		Fern sori WM	30668
	Batrachospermum wm	30334		Marsilea sporocarp TS	30669
	Polysiphonia antheridia wm	30335		Marsilea sorus WM	30670
	Bacteria (Typical)	30336		Selaginella strobillus WM	30671
	Coccus form	30337		Selaginella strobillus LS	30672
	Bacillus form	30338	Gymnosperm	Cycas normal root T.S.	30773
	Spirillum form	30339		Cycas coralloid root T.S.	30774
	Root nodule of Legume TS	30340		Cycas Leaflet (Pinna) T.S.	30775
	Mucor veg. WM	30341		Cycas ovule T.S.	30776
	Phytophthora host leaf TS	30342		Pinus root (old) T.S.	30777
	Rhizopus veg. WM	30343		Pinus young stem T.S.	30778
	Agaricus stipe TS	30344		Pinus male cone T.S.	30779
	Agaricus pileus VS	30345		Pinus pollen grain T.S.	30780
	Agaricus stipe & pileus VS	30346		Ephedra stem T.S.	30781
	Agaricus button stage VS	30347	Angiosperm	Typical Plant Cell (onion)	30882
	Puccinia uredon on wheat leaf TS	30348		Allium root apex mitosis	30883
	Puccinia teleuto on wheat stem TS	30349		Starch Grains	30884
	Puccinia aecidia on barberry leaf	30350		Dicot stem T.S.	30885
	Puccinia pycnidia VS	30351		Monocot stem T.S.	30886
Tissue Slides	Parenchyma, Collenchyma, Sclerenchyma, Xylem, Phloem etc. (set of 20)	30450		Dicot root T.S.	30887
				Monocot leaf T.S.	30888
				Dicot leaf T.S.	30889
				Monocot leaf T.S.	30890

► BIOLOGY ► SLIDES

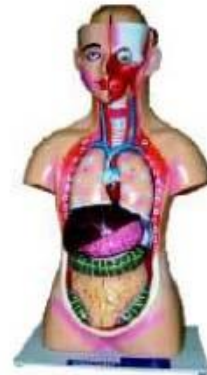
<b>MICRO PREPARED SLIDES</b>			
<b>ZOOLOGY SECTION</b>		<b>CODES</b>	
<b>Protozoa</b>	Amoeba Proteus	30950	
	Balantidium Coli WM	30951	
	Chlamydomonas	30952	
	Entamoeba Histoytica	30953	
	Euglena WM	30954	
	Malaria Parasite	30955	
	Opalina WM	30956	
	Paramoecium WM	30957	
	Paramoecium Fission	30958	
	Paramoecium Conj.	30959	
	Volvox	30960	
	Vorticella	30961	
	<b>Porifera</b>	Sponge Gemmule	31062
		Spongilla WM	31063
Sponge Fibers		31064	
Sycon T.S.		31065	
<b>Coelenterata</b>	Hydra WM	31166	
	Hydra T.S. Body	31167	
	Hydra L.S. Body	31168	
	Obelia Colony WM	31169	
<b>Platyhelminthes</b> /Nemathelminthes	Liver fluke TS different regions	31270	
	Planaria TS	31271	
	Tape worm scolex WM	31272	
	Tape worm proglottid immature	31273	
	Tape worm (Gravid)	31274	
	Tape worm proleittid mature	31275	
	Ascaris male TS	31276	
	Ascaris female TS	31277	
	Ancylostoma	31278	
	Hook worm WM	31279	
	Pin worm WM	31280	
	<b>Annelida</b> / Arthropoda	Earthworm (set of 16 slides)	31381
		Cyclops WM	31382
		Daphnia WM	31383
		Prawn TS	31384
		Cockroach (set of 16 slides)	31385
		Bed Bug WM	31386
Anopheles or culex mosquito male		31387	
Housefly M.P. egg larva, pupa of female adult M.P. egg larva, pupa etc. set of 16 slides etc. set of 14 slides.		31388	
<b>Pisces (Fishes)</b>	Ctenoid scale WM	31489	
	Cycloid scale WM	31490	
	Placoid scale WM	31491	
	Rhomboid scale WM	31492	
<b>Histology</b>	Mammal Histology	31593	
	Frog Histology (set of 40 slides)	31594	
	Human Histology (set of 60 slides)	31595	
<b>Embryology</b>	Frog Embryology (set of 10 slides)	31696	
	Chick Embryology 13,18,21,24,30,33,36,48,56,66,72,96,120 hrs. WM/TS	31697	
	Mitosis (set of 5 slides)	31698	
Meiosis (set of 12 slides)	31699		

BIOLOGY

### HUMAN TORSO

Model showing parts like eye, heart, stomach, liver etc as shown in the picture. Models available are:

Human Body Or Human Torso (90cm.) Male	Code No.: 31800
Human Torso Size (90cm.) Female	Code No.: 31801
Human Torso (sexless) Size 90cm. 8 Parts	Code No.: 31802
Mini Human Torso Size (52cms. App.)	Code No.: 31803
Human Head and Neck	Code No.: 31804



### BRAIN 2 PARTS

Code No.: 31805

This model is prepared in life size with 3D technique. Dorsal view Ventral view and lateral view can be easily demonstrated. This model is dessectable into 2 parts for study of sectional view. Mid brain cerebellum & spinal cord is also shown

Also available :

Brain 4 parts                      Code No.: 31806



### HUMAN EYE

Code No.: 31807

Only Eye ball dissectable in 7 parts is shown on stand.

Also available :

Human Eye with Orbit              Code No.: 31808



### HUMAN EAR

Code No.: 31809

Mounted on board size 8" x 14". This model also provides 3D view. Semicircular canals and cochlea can be taken out for close look. Ear drum too is detachable.



### HUMAN HEART 4 PARTS

Code No.: 31812

This model is also fabricated in 3D, but divisible into 4 parts mounted on stand. Also available :

Human Heart 2 Parts	Code No.: 31813
Lungs with Heart	Code No.: 31814
Human Lung	Code No.: 31815



### KIDNEY WITH BLADDER

Code No.: 31816

Mounted on wooden base size 12" x 16". It clearly depicts the urinary system. Position of kidneys, ureter and bladder is demonstrated. Also available :

Kidney in Section (Human)              Code No.: 31817



► BIOLOGY ► MODELS ► HUMAN



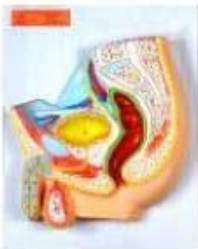
### HUMAN NERVOUS SYSTEM

Code No.: 31819

Fitted on polished wooden board size 10" x 22". Prominent nerves are depicted. Also available:

Human Circulation System . Code No.: 31818

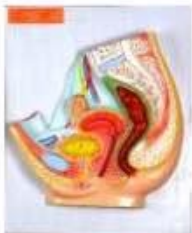
Human Liver. Code No.: 31824



### HUMAN REPRODUCTIVE (URINOGENITAL) SYSTEM

MALE Code No.: 31820

Fixed on board. The Genito Urinary Tract in the Male is Shown. This model is of immense use to students. Penis, Testis, Scrotum, Vas Deferens, Ureter & rectum are sculpted and coloured to make the demonstration easy.



FEMALE Code No.: 31821

Fixed on board. The Genito Urinary Tract in the Female is Shown. This model is of immense use to students. Uterus, Ureter & rectum are sculpted and coloured to make the demonstration easy.



### HUMAN DIGESTIVE SYSTEM

Code No.: 31822

Fixed on wooden board size 24" x 10" in this model. Alimentary tract is shown. Oesophagus, Stomach Small Intestine, Large Intestine, Appendix and finally Anus is demonstrated.



### HUMAN RESPIRATORY SYSTEM

Code No.: 31823

Nasal cavity, Epiglottis, Larynx, Bronchus and Bronchial tubes are shown. One leg is shown intact and the other is shown in section in which Air Sacs can be seen.



### HUMAN BABY WITH PELVIS

Code No.: 31871

Fixed on board. Showing female Pelvis with baby. This model is of immense use to students.

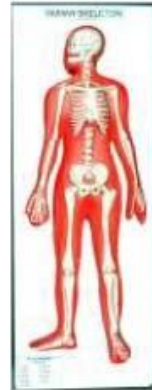
*For more models please see our current price list.*

▶ BIOLOGY ▶ MODELS ▶ HUMAN

**HUMAN SKELETON**

Showing all parts (Bones) in the body.  
Also available :

- Human Skeleton Articulated Life Size      Code No.: 31872
- Folding Metal Stand      Code No.: 31873
- Human Skeleton ( Disarticulated )      Code No.: 31874
- Mini Human Skeleton      Code No.: 31875
- Mini Human Skeleton Plastic      Code No.: 31876



Code No. :31875



FIBRE GLASS  
ON STAND 5 FEET MODEL  
Code No. :31885



PLASTIC ON STAND  
Code No. :31880



ON STAND  
TOP QUALITY TABLE MODEL  
Code No. :31890



▶ BIOLOGY ▶ MODELS

MODELS	
Human Models - Made from fibre glass	
CODE	NAME
31800	Human Body or Human Torso (90cm) Male
31801	Human Torso size (90cm) Female
31802	Human Torso (Sexless) size about 90cm 8 parts
31803	Mini Human Torso size (52cm app.)
31804	Human Head and Neck
31805	Brain 2 parts
31806	Brain 4 parts
31807	Human Eye
31808	Human Eye with Orbit:
31809	Human Ear
31810	Teeth with Lower Jaw
31811	Human skin
31812	Human Heart 4 Parts
31813	Human Heart 2 parts
31814	Lungs with Heart
31815	Human Lung
31816	Kidney With Bladder
31817	Kidney in Section (Human)
31818	Human Circulation System
31819	Human Nervous System
31820	Human Reproductive (Urinogenital)System Male
31821	Human (Urinogenetal) Reproduction System Female
31822	Human Digestive System
31823	Human Respiratory System
31824	Human Liver
31825	Stomach
31850	Evolution of Man
	(i) Crogmagnon (ii) Sinathropus (iii) Pthecanthropus
	(iv) Australopithecus
31854	Evolution of Man Set of 14 model fitted on 4 large size boards
	1. PLIOTHECUS
	2. PROCONSUL
	3. DRYOPITHECUS
	4. OREOPITHCUS
	5. RAMA PITHECUS
	6. AUSTRALOPITHECUS
	7. AUSTRALOPITHECUS ROBUSTUS
	8. HOMOABILIS
	9. HOMOERECTUS
	10. EARLY HOMO SPIENS
	11. RHODESIAN MAN
	12. NEANDERTHAL
	13. CROGMAGNON MAN    14. MODERN MAN
31868	Bony Pelvis female
31869	Foetal Skull
31870	Development of Human Embryo
31871	Female Pelvis with Baby
31872	Human Skeleton Articulated Life Size
31873	Folding Metal Stand
31874	Human Skeleton ( Disarticulated )
31875	Mini Human Skeleton
31876	Mini Human Skeleton Plastic
ANIMAL CELLS & TISSUE MODELS	
31977	Typical Animal Cell under Electron Microscope
31978	Cell Division Mitosis
31979	Cell Division Meiosis
31980	D.N.A ( Deoxyribo Nucleic Acid )
31981	R.N.A ( Ribo nucleic Acid )

**STEM T.S. DICOT**

Code No.: 32329

This model shows all the details of stem mounted on board.



**ROOT T.S. MONOCOT**

Code No.: 32323

Showing all details of Monocot root on board.



**ROOT T.S DICOT On board.**

Code No.: 32324

Showing all details of Monocot root on board.



**STEM T.S. (MONOCOT)**

Code No.: 32328

Showing all details of tissues onboard

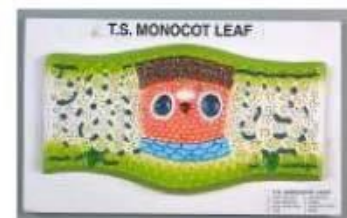


**LEAF T.S. MONOCOT**

Code No.: 32331

All tissues are shown with details on board.

For other models see index on next page



▶ BIOLOGY ▶ MODELS

<b>MODELS</b>	
CODES	<b>GENERAL ZOOLOGICAL MODELS</b>
32100	Amoeba Mounted on board , showing general structure
32101	Paramoecium is mounted on board in lateral view
32102	Earthworm Dissection Shows prominent internal organs
32103	Cockroach Dissection All dissected parts
32104	L.H.House Fly L.H.stages mounted on 12" x 18" board
32105	L.H.Mosquito ( Culex ) L.H.stages from Eg to Adult on board
32106	L.H.Mosquito Anopheles L.H.stages from Egg to Adult on board
32107	L.H.Housefly Eggs Catterpillar , Pupa Head of Imago and adult , housefly in dorsal view is shown
32108	L.H.Butterfly Eggs Catterpillar , Pupa Head of Imago and adult . Butterfly in dorsal view is shown
32109	L.H.Silk Worm Eggs Cocoon Catterpillar , Pupa and fully development silk worm is shown.
32110	L.H.Honey Bee Gradual development in L.H. stages are depicted worker Queen and Drone are aslo shown.
CODES	<b>MODEL OF FROG , RABBIT &amp; RAT</b>
32210	Dissection
32211	Arterial System
32212	Venous System
32213	Heart Dissected
32214	Brain
32215	Skin
32216	Reproductive System Male
32217	Reproductive System Female
32218	Nervous System
32219	Digestive System
32220	Excretory System
32221	Development of Frog
32222	Larval Development & Metamorphosis
<b>Botany Models Code - Made of Fireglass Unbreakable Material</b>	
32320	Typical Plant Cell
32321	Mitosis Plant Cell division
32322	Meiosis Plant Cell Division
32323	Root T.S. Moncot
32324	Root T.S. (Dicot)
32325	Root T.S. (Dicot& Monocot)
32326	Root Monocot
32327	Root Anatomy
32328	Stem T.S. (Monocot)
32329	Stem T.S. Dicot
32330	Leaf T.S (Dicot)
32331	Leaf T.S (Monocot)
32332	Dicot Leaf Anatomy
32333	Owules Types
32334	Seed Germination
32335	Typical Flower
32336	Typical Flower
32337	Ovary with Stamen

▶ BIOLOGY ▶ CHART

## CHARTS

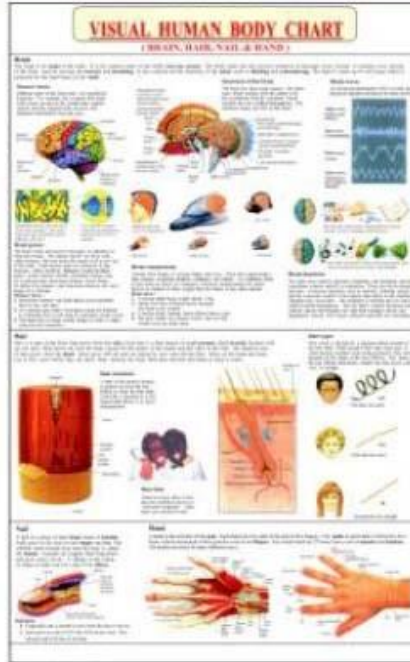
Chart Size Codes					
CODE	width	cms	length	Description	pattern
AS	20	x	35	Plastic 3 D raised	<b>in sets only</b>
AS 1	20	x	35	Plastic 3 D raised	With hanging hooks <b>in sets only</b>
B 1	35	x	50	Plastic 3 D raised	Sheets
B 2	35	x	50	Plastic 3 D raised	Sheets with hanging hooks
C 1	50	x	70	Plastic 3 D raised	Sheets
C 2	50	x	70	Plastic 3 D raised	Sheets with hanging hooks
D 1	55	x	90	Paper laminated	Individual sheet
E 1	75	x	100	Plastic charts	Individual sheet
E 2	75	x	100	Plastic charts with rollers	Individual sheet
E 3	75	x	100	Rexin black or white	Individual sheet
F 1	100	x	75	3 D raised models PVC	Individual sheet
G 1	100	x	150	Rexin white only	Individual sheet

Human Body Series	
paper laminated (56cmx90cm)	
33000	Skeleton
33001	Teeth
33002	Blood Circulation & Heart
33003	Blood Group, Blood Pressure & Blood Cells
33004	Five senses
33005	Brain, Hair, Nail & Hand
33006	Muscles
33007	Heart attack, Cancer & AIDS
33008	Digestive & Urinary Systems
33009	Respiratory & Nervous System
33010	Kidney & Liver
33011	Male & Female Genital Organs

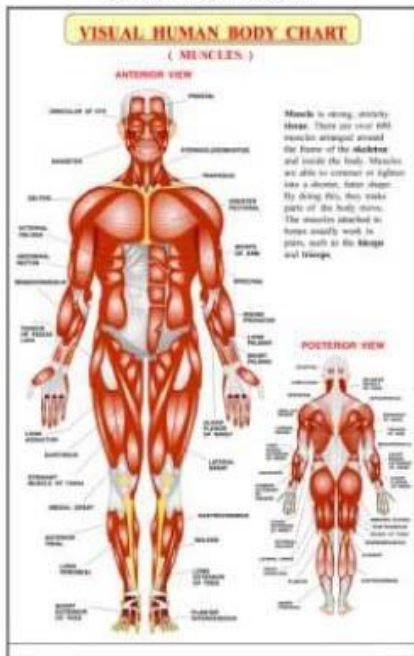
▶ BIOLOGY ▶ CHART



**FIVE SENSES**  
Code No.: 33004



**BRAIN, HAIR, NAIL & HAND**  
Code No.: 33005



**MUSCLES**  
Code No.: 33006

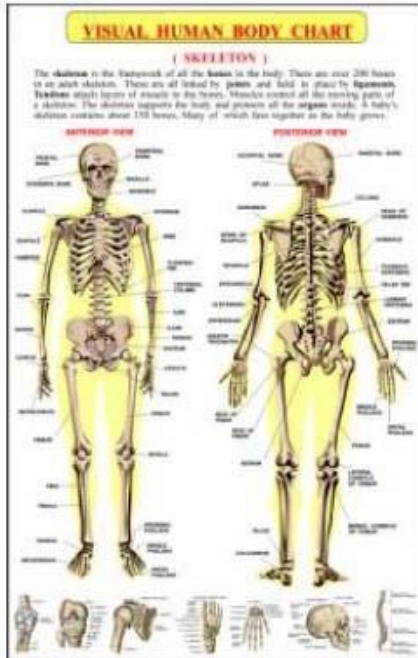


**HEART ATTACK, CANCER & AIDS**  
Code No.: 33007

BIOLOGY



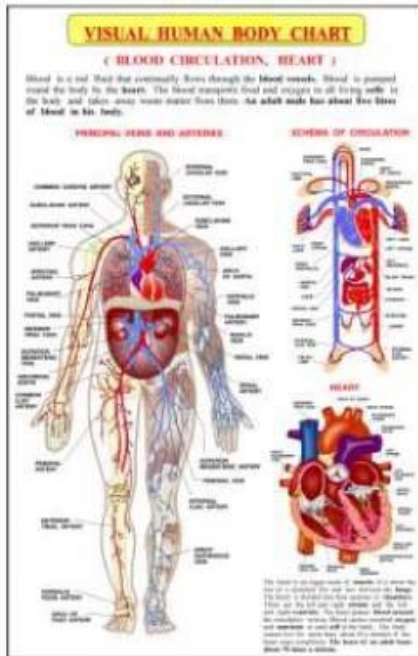
**BIOLOGY** ▶ **CHART**



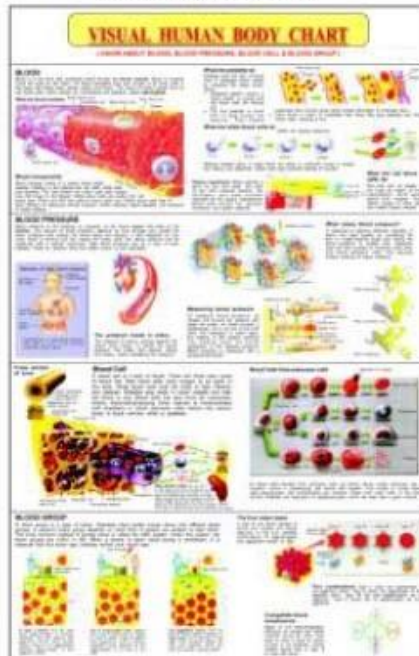
**SKELETON**  
Code No.: 33000



**TEETH**  
Code No.: 33001



**BLOOD CIRCULATION & HEART**  
Code No.: 33002

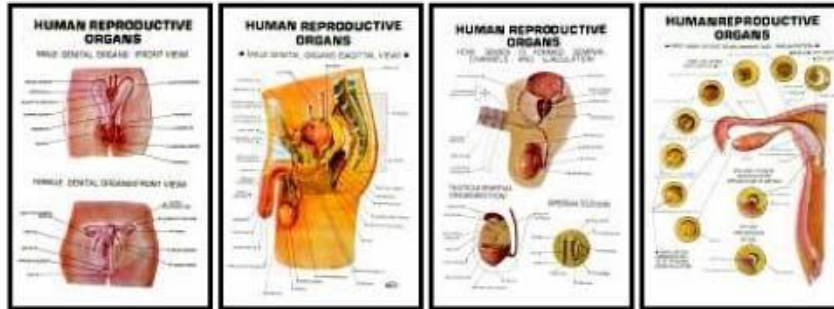


**BLOOD, PRESSURE & CELLS GROUP**  
Code No.: 33001

**BIOLOGY CHART**



**HUMAN REPRODUCTIVE ORGANS (SET OF 8)**



**Available Sizes(see chart)  
AS, AS 1, B 1, B 2, C 1, C 2**



HUMAN REPRODUCTIVE ORGAN (Set of 8)	
Size	Code
AS set	33250
AS 1 set	33260
B 1 set	33270
B 2 set	33280
C 1 set	33290
C 2 set	33300

Individual Codes for different sizes						
Charts	AS	AS 1	B 1	B 2	C 1	C 2
Male Genital organs ( front view)	33251	33261	33271	33281	33291	33301
Male genital organs	33252	33262	33272	33282	33292	33302
How semen is formed	33253	33263	33273	33283	33293	33303
First Week of Egg Development & Implantation	33254	33264	33274	33284	33294	33304
Fertilization (Cross Section diagram of an Ovary)	33255	33265	33275	33285	33295	33305
Eight Month Old Fetus	33256	33266	33276	33286	33296	33306
Various Stages of Embryonic Development	33257	33267	33277	33287	33297	33307
Female Genital Organs (Sagittal View)	33258	33268	33278	33288	33298	33308

**BIOLOGY**

**BIOLOGY ▶ CHART**

**HUMAN ANATOMY (SET OF 11)**

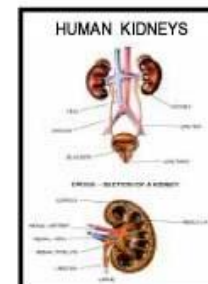
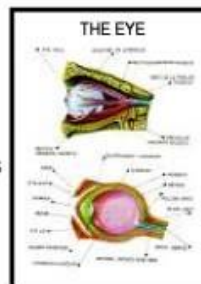
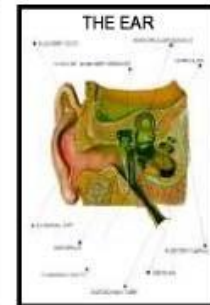
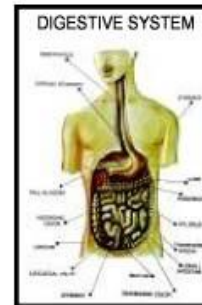
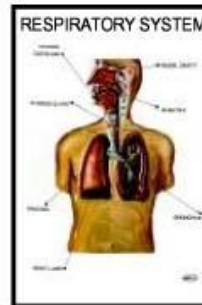
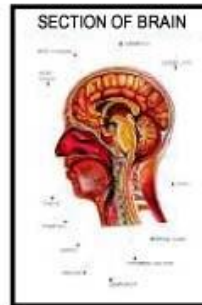
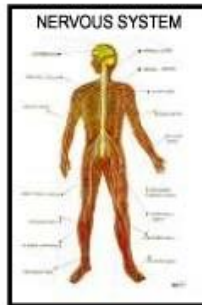
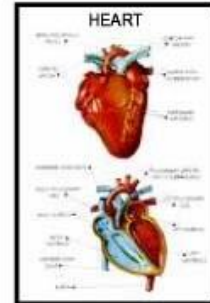
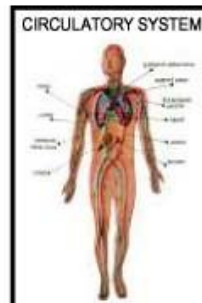
**Available Sizes  
AS, AS 1, B 1, B 2, C 1, C 2**



HUMAN ANATOMY (Set of 11)	
Size code	Code
AS set	33100
AS 1 set	33120
B 1 set	33140
B 2 set	33160
C 1 set	33180
C 2 set	33200

Individual code for the size AS	
Code	Charts
33101	SKELETON
33102	CIRCULATORY SYSTEM
33103	HEART
33104	NERVOUS SYSTEM
33105	SECTION OF BRAIN
33106	MUSCLES
33107	DIGESTIVE SYSTEM
33108	RESPIRATORY SYSTEM
33109	THE EAR
33110	THE EYE
33111	HUMAN KIDNEYS

Similarly individual codes for other set of sizes starts after their set code as per the table shown above.





**BIOLOGY ► CHART**

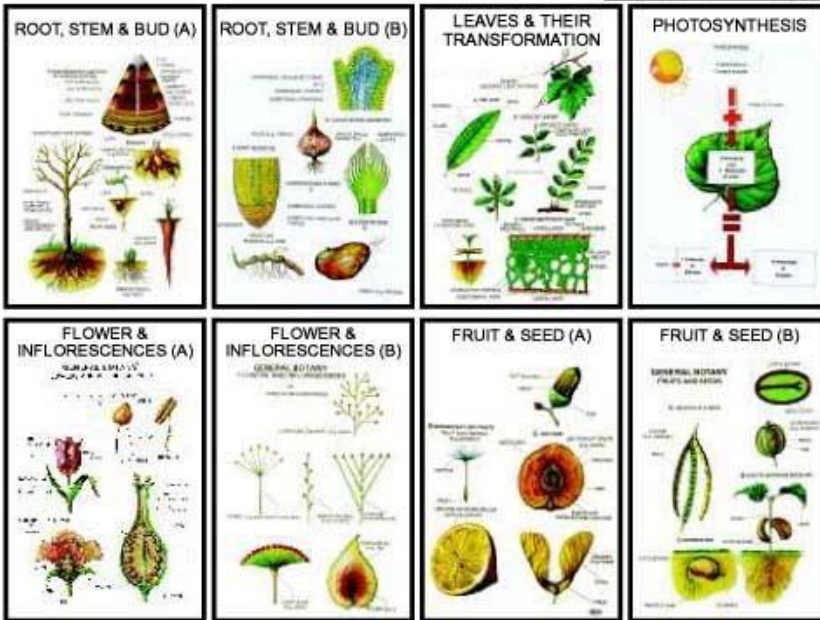


**BOTANY- I (SET OF 8)**

**BOTANY-I**  
Available Sizes  
AS, AS 1, C 1, C 2

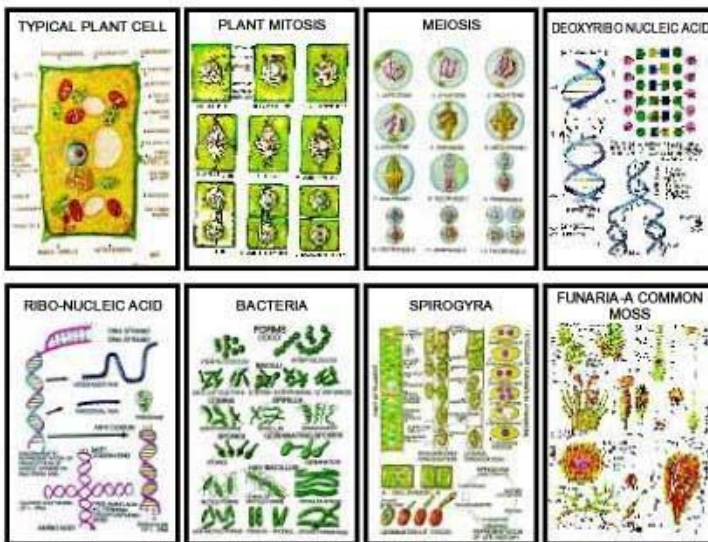
Botany-1 (set of 8)	
Size	Code
AS set	33330
AS 1 set	33340
C 1 set	33350
C 2 set	33360

Code for size - AS	Charts
33331	Root, Stem & Bud (A).
33332	Root, Stem & Bud (B).
33333	Leaves & their transformation.
33334	Photosynthesis.
33335	Flower & Inflorescences (A).
33336	Flower & Inflorescences (B).
33337	Fruit & Seeds (A).
33338	Fruit & Seeds (B).



**BOTANY- 2 (SET OF 8)**

Available Sizes  
AS, AS 1, B 1, B 2, C 1, C 2



Botany-2 (set of 8)	
Size	Code
AS set	33390
AS 1 set	33400
B 1 set	33410
B 2 set	33420
C 1 set	33430
C 2 set	33440

Code for size - AS	BOTANY II
33391	Typical plant cell.
33392	Plant Mitosis.
33393	Meiosis.
33394	D.N.A.
33395	R.N.A.
33396	Bacteria.
33397	Spirogyra.
33398	Funaria.

Similarly individual codes for other set of sizes starts after their set code as per the table shown above.

BIOLOGY

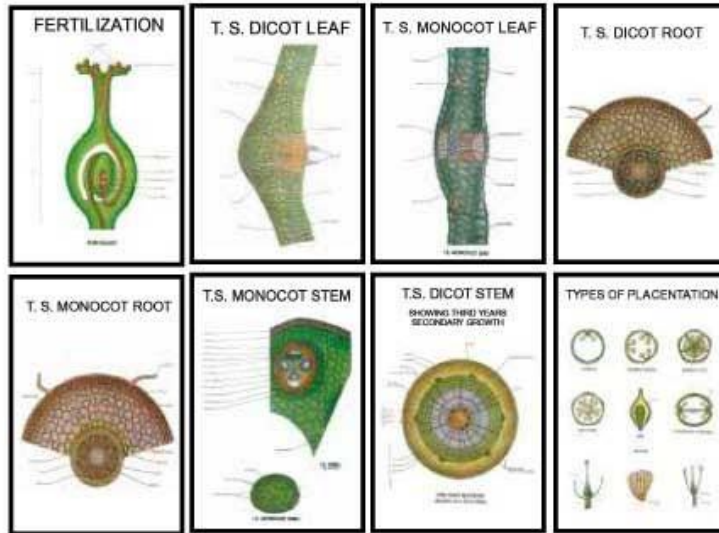
**BIOLOGY CHART**



**BOTANY- 3 (SET OF 8)**

**Available Sizes  
AS, AS1, C1, C2**

Botany-3 (set of 8)		Codes for size - C 1	Charts
Size	Code	33481	Fertilization.
AS set	33460	33482	T.S. Dicot leaf.
AS 1 set	33470	33483	T.S. Monocot leaf.
C 1 set	33480	33484	T.S. Dicot root.
C 2 set	33490	33485	T.S. Monocot root.
		33486	T.S. Dicot stem.
		33487	T.S. Monocot stem.
		33488	Types of placentation.



**BOTANY- 4 (SET OF 11)**

**Available Sizes  
AS, AS 1, C 1, C 2**

Botany-4 (set of 11)	
Size	Code
AS set	33520
AS 1 set	33540
C 1 set	33580
C 2 set	33580

Order/size - AS	Chart Number/AS	Order/size - AS	Chart Number
0001	RNA	0001	Animal tissue
0002	Protein	0002	Tissue plant cell
0003	Enzyme	0003	Plant tissue
0004	Animal tissue	0004	Tissue Animal cell
0005	RNA		

Similarly individual codes for other set of sizes starts after their set code as per the table shown above.



**BIOLOGY CHART**



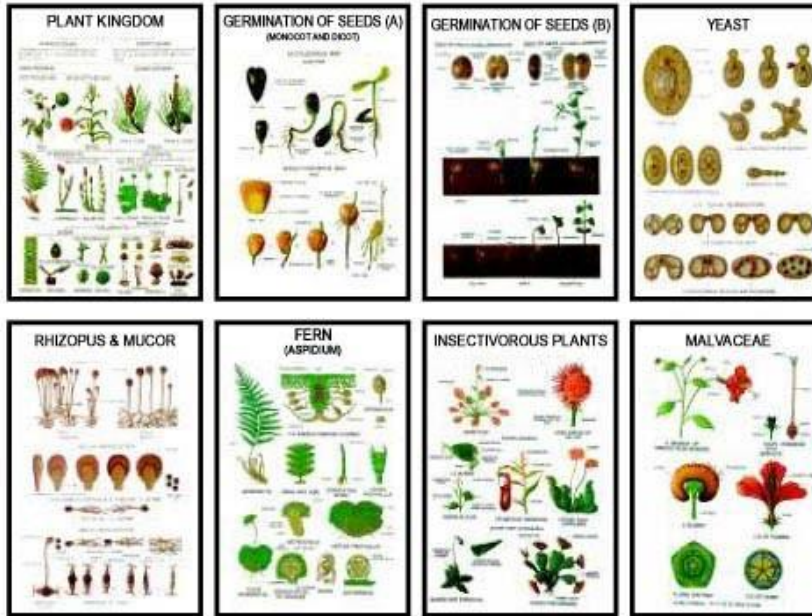
**BOTANY- 5 (SET OF 8)**

**Available Sizes  
AS, AS 1, C 1, C 2**

Botany-5 (set of 8)	
Size	Code
AS set	33610
AS 1 set	33620
C 1 set	33630
C 2 set	33640

Code for size - C 2	Charts
33641	Plant Kingdom.
33642	Germination of Sunflower & Maize
33643	Germination of Bean & Pea
33644	Yeast
33645	Rhizopus & Mucor
33646	Fern
33647	Insectivorous Plants
33648	Malvaceae

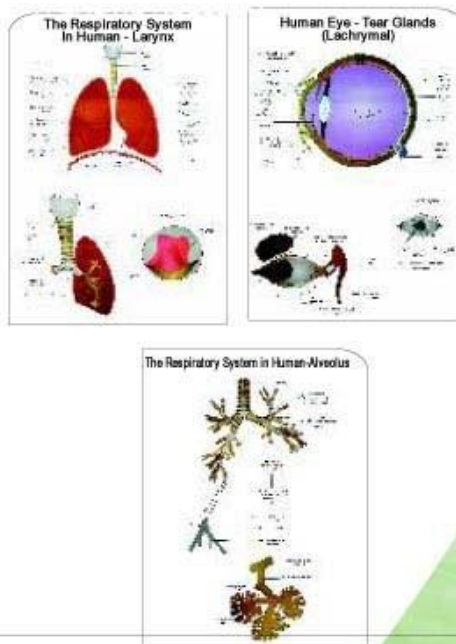
Similarly individual codes for other set of sizes starts after their set code as per the table shown above.



**HUMAN PHYSIOLOGY**

**Available Sizes  
E 1, E 2**

Code for size - E 1	Code for size - E 2	Charts
33700	33730	The Lymphatic System in Human
33701	33731	Excretory System in Human -Kidney, L.S.
33702	33732	Excretory System in Human -Ureters
33703	33733	Excretory System in Human - Urinary bladder
33704	33734	Excretory System in Human - Malpighian Corpuscle
33705	33735	T.S. in Human Skin
33706	33736	Reproductive System in Human
33707	33737	Human Brain External Features
33708	33738	L.S. in Human eye-Eye Muscle
33709	33739	L.S. in Human eye-Tear glands
33710	33740	L.S. in Human eye - Physiological diseases of eye
33711	33741	Ear in Human and its parts
33712	33742	Skeletal System in Human
33713	33743	Endocrine glands of Human
33714	33744	Digestive System in Human
33715	33745	Circulatory System in Human-Types of blood cells
33716	33746	Circulatory System in Human - L.S. in heart & T.S. in blood vessel
33717	33747	Circulatory System in Human - Vein valves
33718	33748	Circulatory System in Human - Systematic & Pulmonary circulation in human.
33719	33749	The Respiratory System in Human - Larynx
33720	33750	The Respiratory System in Human - Tracheae
33721	33751	The Respiratory System in Human - Alveolus
33722	33752	Human-L.S. in Central Nervous System (CNS)
33723	33753	Region in which the neural impulses transport from to central nervous system through the synapse in Human
33724	33754	Human Reflexion Arch
33725	33755	Muscular System
33726	33756	Nervous System
33727	33757	Teeth



BIOLOGY

**BIOLOGY ▶ CHART**

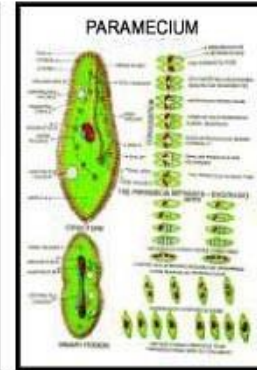
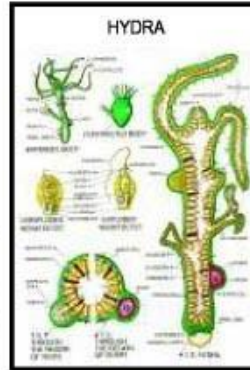


**ZOOLOGY - I (SET OF 8)**

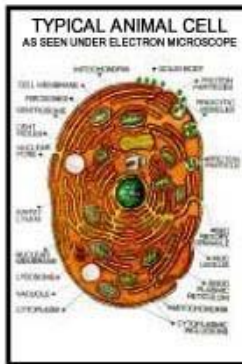
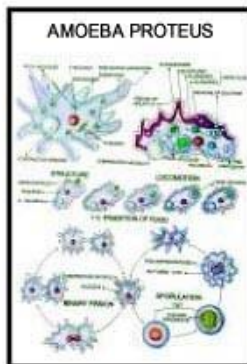
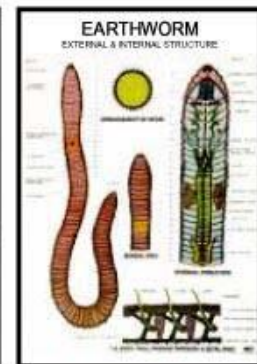
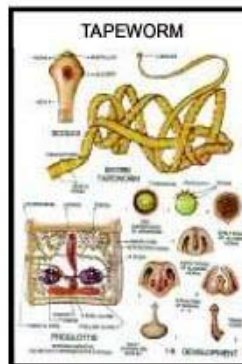
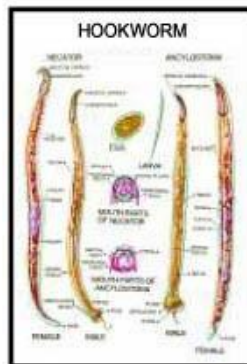
**Available Sizes  
AS, AS 1, C 1, C 2**

Zoology-1 (set of 8)	
Size	Code
AS set	33800
AS 1 set	33810
C 1 set	33820
C 2 set	33830

Code for size - AS 1	Charts
33811	Typical Animal Cell
33812	Animal Mitosis
33813	Hydra
33814	Paramecium
33815	Amoeba Proteus
33816	Hook worm
33817	Tapeworm
33818	Earthworm



Similarly individual codes for other set of sizes starts after their set code as per the table shown above.



**BIOLOGY CHART**

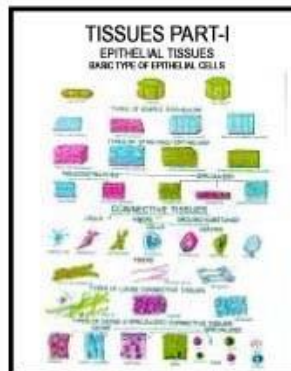
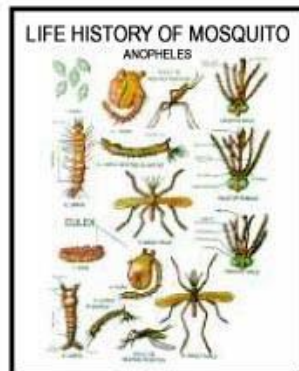
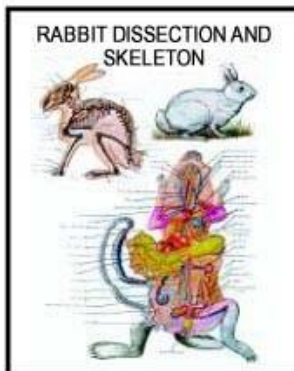
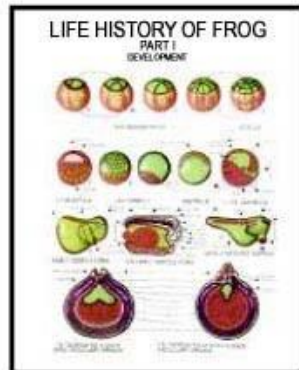
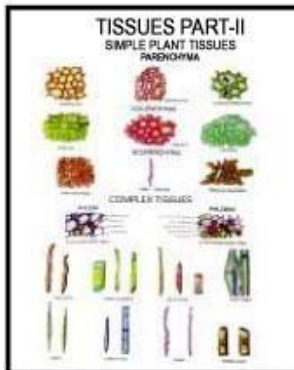
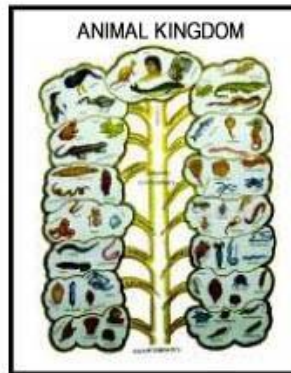


**ZOOLOGY - 2 (SET OF 8)**

Available Sizes  
AS, AS 1, C 1, C 2

Code for size - AS	Charts
33901	Euglena
33902	Animal Kingdom
33903	L.H. of frog (Development)
33904	L.H. of frog (Metamorphosis)
33905	L.H. of Mosquito
33906	Epithelial & Connective Tissue
33907	Simple & Complex Tissue
33908	Rabbit Dissection & Skeleton

Zoology-2 (set of 8)	
Size	Code
AS set	33900
AS 1 set	33910
C 1 set	33920
C 2 set	33930



Similarly individual codes for other set of sizes starts after their set code as per the table shown above.

BIOLOGY

**BIOLOGY ▶ CHART**

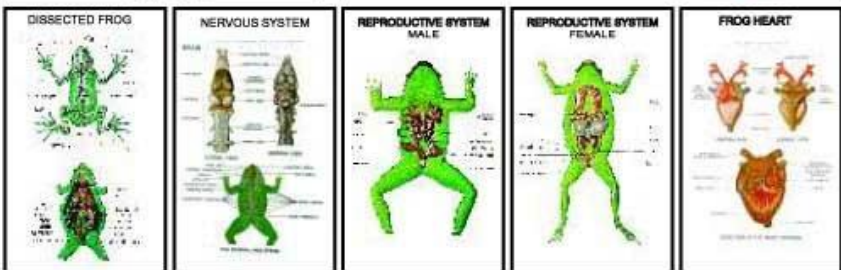
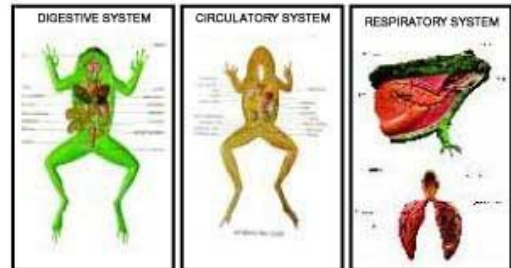
**3D**

**ZOOLOGY - 3 FROG (SET OF 8)**

**Available Sizes  
AS, AS 1, C 1, C 2**

Zoology-3 (set of 8)	
Size	Code
AS set	34000
AS 1 set	34010
C 1 set	34020
C 2 set	34030

Code for size -AS	Charts
33031	Frog Anatomy and Skeleton.
33032	Frog Digestive.
33033	Frog Circulatory.
33034	Frog Respiratory System
33035	Frog Nervous System
33036	Frog Reproductive System (Male)
33037	Frog Reproductive System (Female)
33038	Frog Heart

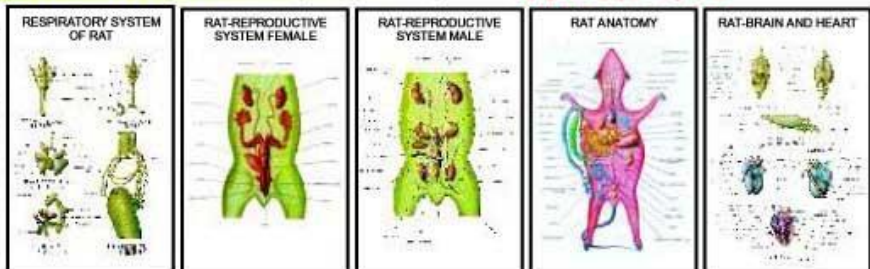


Similarly individual codes for other set of sizes starts after their set code as per the table shown above.

**ZOOLOGY - 4 RAT (SET OF 8)**

**Available Sizes  
AS, AS 1, C 1, C 2**

Zoology-4 (set of 8)	
Size	Code
AS set	34100
AS 1 set	34110
C 1 set	34120
C 2 set	34130






Similarly individual codes for other set of sizes starts after their set code as per the table shown above.

**BIOLOGY** ▶ **CHART**



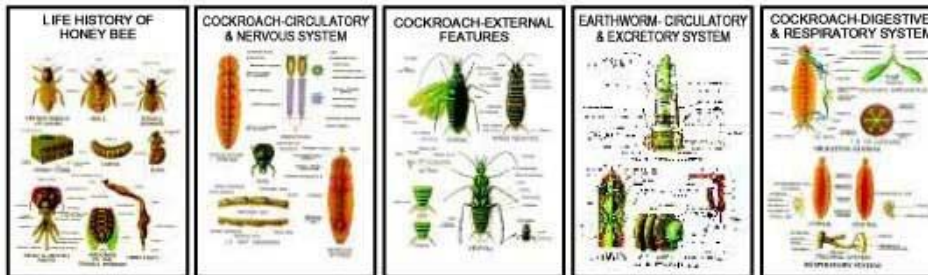
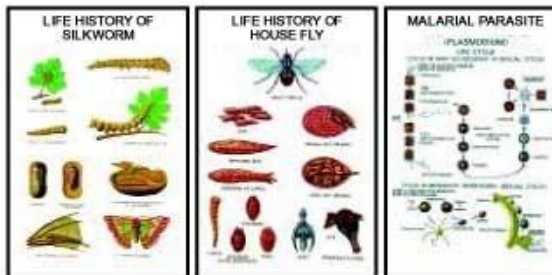
**ZOOLOGY - 5 (SET OF 8)**

**Available Sizes**  
AS, AS 1, C 1, C 2

Zoology-5 (set of 8)	
Size	Code
AS set	34200
AS 1 set	34210
C 1 set	34220
C 2 set	34230

Code for size -C 1	Charts
34221	Life History of Honey Bee
34222	Life History of Silkworm
34223	Life History of Housefly
34224	Malarial Parasite(Plasmodium)
34225	Cockroach - Circulatory & Nervous System
34226	Cockroach-External features
34227	Earthworm-Circulatory & Excretory System.
34228	Cockroach - Digestive & Respiratory System

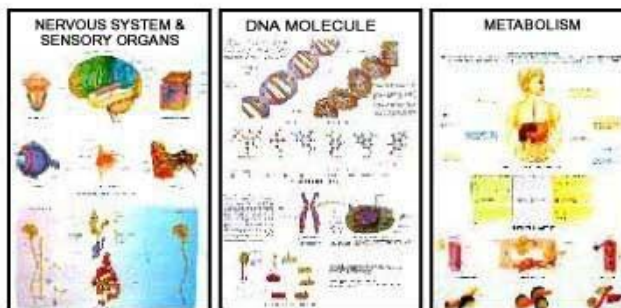
Similarly individual codes for other set of sizes starts after their set code as per the table shown above.



**GENERAL**

**Available Sizes**  
AS, AS 1, C 1, C 2

Charts	Code for size -AS	Code for size -AS1	Code for size -C 1	Code for size -C 2
Metabolism	34301	34311	34321	34331
DNA Molecule	34302	34312	34322	34332
Nervous System & Sensory Organs	34303	34313	34323	34333
Skull & Joints	34304	34314	34324	34334
How Diseases are Spread	34305	34315	34325	34335
Garden at Night	34306	34316	34326	34336

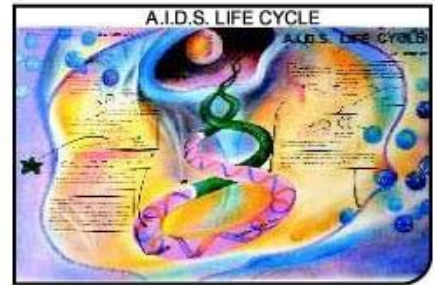


BIOLOGY

**BIOLOGY CHART**

**AIDS CHARTS (SET OF 6)**

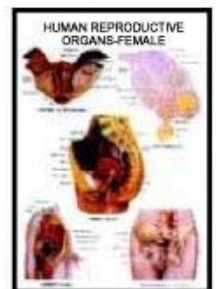
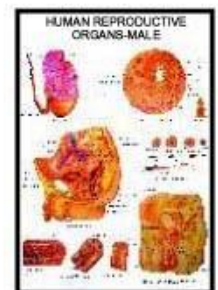
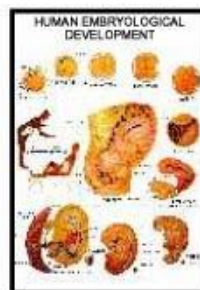
**Available Sizes  
E 1, E 2**



Code for size - E 1	Code for size - E 2	Charts
33400	33410	AIDS Symptoms and Prevention.
33401	33411	Non-contagious Nature of AIDS.
33402	33412	Transmission of Virus that Causes AIDS.
33403	33413	Sexually Transmitted Diseases (S.T.D.)
33404	33414	Life Cycle of AIDS.
33405	33415	Immune System.

**HUMAN REPRODUCTION**

**Available Sizes  
E 1, E 2**



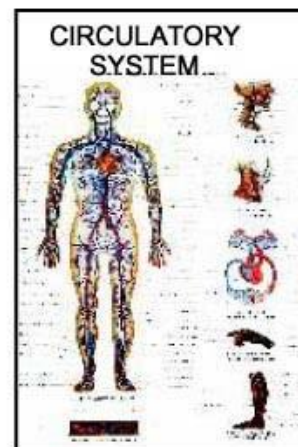
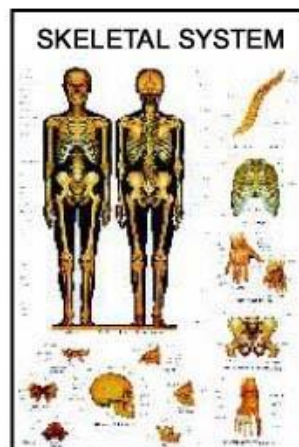
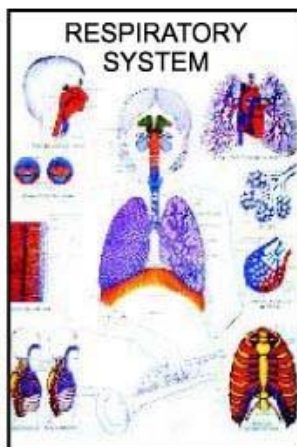
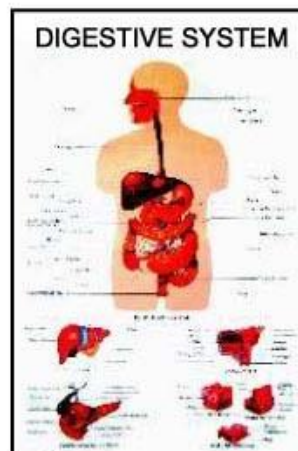
Code for size - E 1	Code for size - E 2	Charts
34450	34460	Human Embryological Development.
34451	34461	Human Life Cycle (Birth).
34452	34462	Human Reproductive Organs Male.
34453	34463	Human Reproductive Organs Female.



## HUMAN PHYSIOLOGY CHARTS

Code for size - E 1	Code for size - E 2	Charts
34500	34540	Skeletal System
34501	34541	Muscular System
34502	34542	Circulatory System
34503	34543	Nervous System
34504	34544	Digestive System
34505	34545	Teeth and Skin
34506	34546	Human Eye , Ear and Head
34507	34547	Lymphatic System
34508	34548	Respiratory System
34509	34549	Endocrine System
34510	34550	Nutrition
34511	34551	Immune System
34512	34552	Human Nose
34513	34553	Human Heart
34514	34554	Excretory System
34515	34555	The Eye
34516	34556	The Ear
34517	34557	The Kidney
34518	34558	Human Lungs
34519	34559	Human Liver
34520	34560	Human Brain
34521	34561	Skin & Sensation
34522	34562	Nervous System & Sensory Organs
34523	34563	Metabolism
34524	34564	Skull & Joints

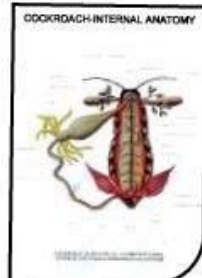
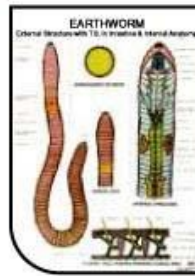
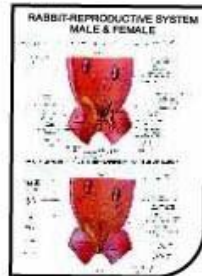
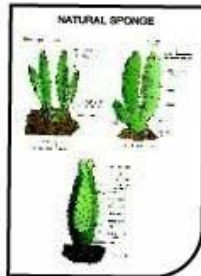
Available Sizes  
E 1, E 2



**BIOLOGY CHART**

**ZOOLOGY CHARTS**

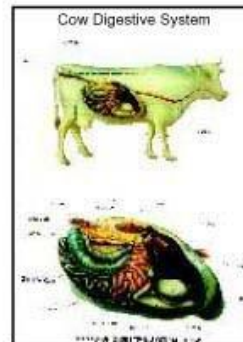
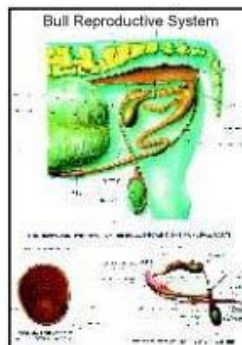
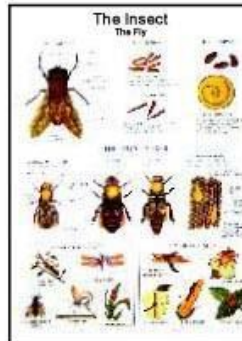
Available Sizes  
E 1, E 2



Code for size - E 1	Code for size - E 2	Charts	Code for size - E 1	Code for size - E 2	Charts
34600	34630	Epithelial Tissues-Simple	34670	34720	Rabbit-General features
34601	34631	Epithelial Tissues-Stratified	34671	34721	Encliestoma worm-male, female, magnified head and life cycle.
34602	34632	Connective Tissues-Loose	34672	34722	Osteichthyes & condrichthyes- External feature to show the gills.
34603	34633	Connective Tissues-Skeleton (Bone, Cartilage)	34673	34723	Osteichthyes & condrichthyes- L.S. In head that show region & structure of gills.
34604	34634	Connective Tissues-Blood	34674	34724	Clam- External features
34605	34635	Nerve Cells-Types of nerve cells	34675	34725	Clam-Section in shell clamp to show the formation of pearl
34606	34636	Nerve Cells-Neuroglia	34676	34726	Cockroach-External
34607	34637	Types of Muscular Cells	34677	34727	Cockroach-The terminal of ventral region of male and female
34608	34638	Plasmodium Vivax Life Cycle	34678	34728	Cockroach-Stages of development of cockroach-insect
34609	34639	Amphioxus embryological development	34679	34729	Star Fish-Dorsal surface
34610	34640	Sponge-external morphology with T.S.	34680	34730	Star Fish-Ventral surface
34611	34641	L.S. in simple sponge	34681	34731	Star Fish-Water Vascular System
34612	34642	Obelia life cycle & T.S. in Medusa	34682	34732	Frog-External Features
34613	34643	Echinococcus life cycle & hydatid cyst	34683	34733	Frog-Fore limb and hind limb
34614	34644	Pin Worm life cycle	34684	34734	Snake-External Features
34615	34645	Earthworm-External structure with T.S. in intestine & internal anatomy	34685	34735	Snake- Head and mouth region
34616	34646	Earth worm-Circulatory system with reproductive system	34686	34736	Pigeon-Respiratory System
34617	34647	L.S. through mouth snail	34687	34737	Pigeon-L.S. of egg
34618	34648	Snail-Reproductive system	34688	34738	Pigeon-External Features
34619	34649	Crayfish-T.S. in branchial chamber	34689	34739	Camel-External Features
34620	34650	Crayfish-Reproductive male & female	34690	34740	Camel-Stomach (Ruminant) & itsparts
34621	34651	Crayfish-Feathery gills	34691	34741	Hydra
34622	34652	Cockroach-Mouth parts	34692	34742	Circulatory system in Grass Hopper
34623	34653	Cockroach-Internal anatomy	34693	34743	Digestive system in fish
34624	34654	Amphioxus-General Structure	34694	34744	Ascaris worm (male and female)
34680	34710	Amphioxus-Circulatory System	34695	34745	Life Cycle of Frog (set of 2)
34661	34711	Amphioxus-Lateral View	34696	34746	Tape Worm-External Features with life cycle
34662	34712	Fish-Circulatory System	34697	34747	Lizards
34663	34713	Fish-Reproductive & Excretory System for male & female	34698	34748	Turtles
34664	34714	Frog-Circulatory System & L.S. in Heart	34699	34749	Natural Sponge
34665	34715	Frog-Skeletal System with Common Vertebra	34700	34750	Mammal Embryo
34666	34716	Pigeon-Skeletal System with fore & hind limbs	34701	34751	Lamb Heart
34667	34717	Pigeon-Arterial & Venous System	34702	34752	Lamb Lungs
34668	34718	Rabbit-Arterial & Venous System with L.S. in heart.	34703	34753	Earth Worm
34669	34719	Rabbit-Reproductive System male and female	34704	34754	Medical Leech
			34705	34755	Star Fish
			34706	34756	Funaria
			34707	34757	Equisetum
			34708	34758	Fucus
			34709	34759	Snail
			34710	34760	Clam
			34711	34761	Insects
			34712	34762	Prawn
			34713	34763	Amphioxus
			34714	34764	Typical Animal Cell
			34715	34765	Vertebrates Skeleton

**GENERAL SCIENCE & DAIRY FARMING**
**Available Sizes  
E 1, E 2**

Code for size - E 1	Code for size - E 2	Charts
<b>General Science</b>		
34800	34870	The Insects (The Fly)
34801	34871	Reproduction of Plants (Part I) Seed Parts Germination and Pollination.
34802	34872	Reproduction of Plants (Part II) Mendels law Supply of Oxygen, Carbondioxide and Nitrogen
34803	34873	The Bird, Food, Beaks & Jaws.
34804	34874	Plants and their Parts (Part I) Flower.
34805	34875	Plants and their Parts (Part II) Root & Stem.
34806	34876	Types of Animals (Part-II) Paramecium, Amoeba, Hydra, Worm, Crayfish, Spider.
34807	34877	Types of Animals (Part II) Fish, Amphibian, Reptiles, Birds and Mammals.
34808	34878	Foods and their uses Part-I
34809	34879	Foods and their uses Part-II
34810	34880	Plant Diseases and their control.
34811	34881	Animal Diseases and their control.
34812	34882	Human Body-All Parts.
34813	34883	Germination
34814	34884	Classification of Plants.
34815	34885	Classification of Animals.
34816	34886	Oxygen Cycle.
34817	34887	Carbon Cycle.
34818	34888	Nitrogen Cycle.
34819	34889	Reproduction in Animals Part-I
34820	34890	Reproduction in Animals Part-II
34821	34891	Photosynthesis
34822	34892	Life History of Butterfly
34823	34893	Butterfly Part-I
34824	34894	Butterfly Part-II
<b>DAIRY FARMING</b>		
34830	34910	Bull Reproductive System
34831	34911	Cow Reproductive System
34832	34912	Cow Digestive System
34833	34913	Cow Respiratory System
34834	34914	Cow Urinary System
34835	34915	Cow Skeleton System
34836	34916	Lamb Heart
34837	34917	Lamb Lungs
34838	34918	Bird Skeleton
34839	34919	Bird Respiratory System
34840	34920	Bird Digestive System
34841	34921	Mono Gastric Digestive System in Animals
34842	34922	Chick Embryology (Set of Two charts)
34843	34923	Sheep - Male Reproductive System
34844	34924	Sheep - Female Reproductive System
34845	34925	Chick Embryology Set (Part-I)
34846	34926	Chick Embryology Set (Part-II)

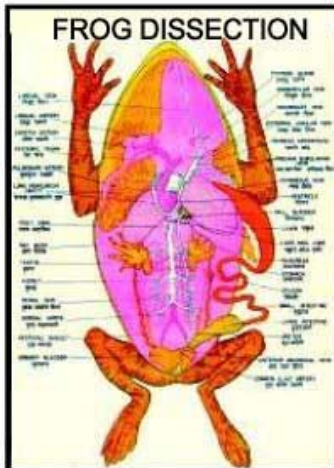


**BIOLOGY CHART**

**ZOOLOGY CHARTS**

**FROG ANATOMY CHARTS**

**Available Sizes  
D 1**



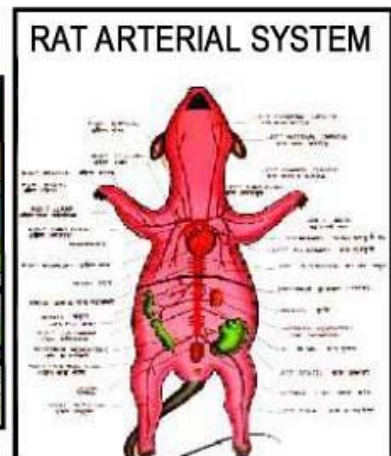
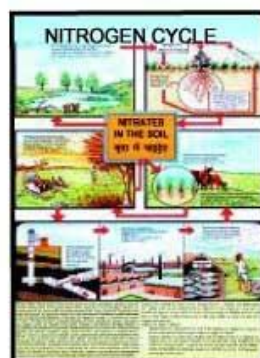
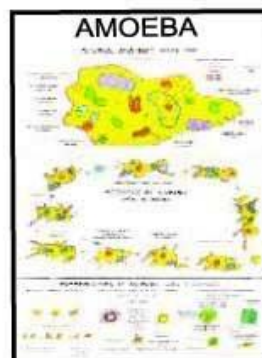
Code	Charts	Code	Charts
35000	Life History of Frog	35015	Appendicular Skeleton
35001	Vertebral Column	35016	Skull
35002	Brain	35017	Blood Circulation
35003	T. S. Ovary & Testis	35018	Reproductive System
35004	Respiratory System	35019	Excretory system
35005	Embryonic Development	35020	Skeleton
35006	Dissection General Anatomy (Alimentary Canal)	35021	Sense Organs
		35022	Cells & Tissues
35007	T. S. Body Region	35023	Skin
35008	Heart	35024	Histology
35009	Nervous System	35025	Central Nervous System
35010	Arteial System	35026	External Features (Buccal Cavity)
35011	Digestive System		
35012	Venous System		

Code	Charts	Code	Charts
35100	Life History of Frog.	35140	Life History of mosquito
35101	Life History of Butterfly	35141	Life History of Housefly
35102	Life History of Silkworm	35142	Life History of Honey bee
35103	Epithelial Tissue	35143	Life History of Earthworm
35104	Life History of Cockroach	35144	Life History of Tapeworm
35105	Life History of Malaria Parasite	35145	Life History of Amoeba
35106	Harmful Insects	35146	Beneficial Insects
35107	Food Habits of Birds	35147	Life History of Liver Fluke
35108	Snakes Chart	35148	Mouth parts of Insects
35109	Carbon Cycle in Nature	35149	Nitrogen Cycle in Nature
35110	Ultrastructure of Plant & Animal	35150	Hookworm
35111	Paramecium	35151	Fish Anatomy (Physiology)
35112	Rabbit Dissection	35152	Hydra
35113	Animal Cell	35153	Animal Kingdom
35114	Gametogenesis in Animals	35154	Fertilization
	Comparative study of Chromosomes in Man, Frog, Maize, Onion, Tobacco. (Variation in Size & Numbers)	35155	R.N.A.
		35156	Food Chain
		35157	Water Cycle 50x75cms
35115	Various Animal Tissues	35158	D.N.A.
35117	Human Blood Cells		
35118	Oxygen Cycle . Size 50 x 75 cms		

**Available Sizes  
D 1**

**RAT ANATOMY CHARTS**

Code	Charts
35200	Rat Anatomy
35201	Rat Digestive System
	Rat External Character (Female Full)
35205	Rat Venous System
35208	Rat Urogenital System (Male & Female)
35210	



## ▶ BIOLOGY ▶ CHART

### BOTANY CHARTS

Code for size - E 1	Code for size - E 2	Charts
35400	35450	Tissue-Epidermis
35401	35451	Tissue-Collenchyma
35402	35452	Tissue-Paranchyma
35403	35453	Tissue - Scleranchyma (Fibers, Stone cell)
35404	35454	Tissue - Cork
35405	35455	Tissue - Xylem T.S. in simple pit and bordered Pit
35406	35456	Tissue - Phloem
35407	35457	L.S. in root tip and T.S. in its different regions
35408	35458	T.S. in dicot and monocot root.
35409	35459	T.S. in root to show secondary growth
35410	35460	L.S. in root apex and T.S. in different regions.
35411	35461	T.S. in dicot and monocot stem
35412	35462	T.S. in stem to show & growth with a drawing of lenticel
35413	35463	Flower-L.S. in flower
35414	35464	Flower-T.S. in anther
35415	35465	Flower-L.S. for ovary to show embryo sac
35416	35466	Flower-External features of flower
35417	35467	Marchantia
35418	35468	Marchantia - Life Cycle
35419	35469	Adiantum
35420	35470	Adiantum - Life Cycle
35421	35471	Pinus - External feature
35422	35472	Pinus - Male and female strobili
35423	35473	Pinus - L.S. through male strobilus
35424	35474	Pinus - L.S. through female strobilus
35425	35475	Stages of formation of female gametophyte with process Of pollenation fertilization formation of seed and L.S. in seed
35426	35476	T.S. in epidermis stem that show the Lenticel
35427	35477	Types of red algae (polysiphonia)
35428	35478	Seed of Vicia Faba opened with its different parts
35429	35479	Stages of germinating of the wheat seed
35430	35480	Stages of germinating of the cast or bean seed (Ricinus commanis)
35431	35481	Animal & Plant cell
35432	35482	Typical Plant Cell
35433	35483	Plant Mitosis
35434	35484	Classification of Plants
35435	35485	DNA Molecule

#### Available Sizes E 1, E 2

